



**SHRI SANGAMESHWAR SHIKSHANA SAMSTHA'S
SHRI SANGAMESHWAR ARTS, COMMERCE, BCA, BSW &
PG (M.COM. & MSW) COLLEGE, CHADCHAN- 586 205
(AFFILIATED TO RANI CHANNAMMA UNIVERSITY BELAGAVI)**



CRITERION VII - INSTITUTIONAL VALUES AND BEST PRACTICES

7.1 - Institutional Values and Social Responsibilities

7.1.5 - Green campus initiatives include

1. Restricted entry of automobiles
2. Use of bicycles/ Battery-powered vehicles
3. Pedestrian-friendly pathways
4. Ban on use of plastic
5. Landscaping



Principal

**Shri Sangameshwar Arts & Comm. College
CHADCHAN-586-205. (Dist. vijayapur)**

CRITERION VII - INSTITUTIONAL VALUES AND BEST PRACTICES

7.1 - Institutional Values and Social Responsibilities

7.1.5 - Green campus initiatives include

7.1.5.1 - The institutional initiatives for greening the campus are as follows:

1. Restricted entry of automobiles
2. Use of bicycles/ Battery-powered vehicles
3. Pedestrian-friendly pathways
4. Ban on use of plastic
5. Landscaping

Shri Sangameshwar Arts, Commerce, BCA, BSW & PG (M.Com.&MSW) College, Chadchan, was established by the renowned Shri Sangameshwar Shikshana Samstha's (1952) in the year 1973. Today, it enjoys flagship status among the eight constituent institutions, that are governed by Shri Sangameshwar Shikshana Samstha's. Our campus surrounded by green fields, the 18-acre campus, is all set in lush green environs, providing stimulating academic ambience. The college comprises 2 major buildings designed for optimum day lighting, ventilation with trees. The institute strikes a balance between its promises and practices, raising awareness on environmental challenges among staff and students, making suggestions on how to 'Go Green'. Clean and green programmes organised by the college to create awareness among the rural areas of Chadchan is just an example to tell SSAC is a green campus.

INSTITUTIONAL INITIATIVES:

1. RESTRICTED ENTRY OF AUTOMOBILES

The college supports use of KSRTC buses which covering each corner of Chadchan to facilitate the students and staff. The institute encourages the staff and students to use public transport instead of their own vehicles for safety, security, fuel conservation and to reduce environmental pollution. The vehicles owned by faculty or students with pollution check stickers are permitted into the campus. Random checks are made to check the validation and periodicity of this certificate. For two wheelers or four wheelers, security measures are mandatory.



A handwritten signature in green ink, likely of the Principal, written over the printed name.

Principal

Shri Sangameshwar Arts & Comm. College
CHADCHAN-586-205. (Dist. vitavapur)

2. USE OF BICYCLES

Our students are staying in BCM hostel and they are using bicycle to go from hostel to college and vice versa. Students and staff members are coming from nearby villages also prefer bicycle/public transport as a mode of transport for attending the college. It is environment friendly and prevents pollution.

3. PEDESTRIAN FRIENDLY PATHWAYS

Vehicle parking space is provided at the main entrance of the college campus. As the campus is vehicle free with some exceptions, students and staff experience comfort walking through the pedestrian friendly pathways. They are properly maintained by the campus beautification/maintenance committee.

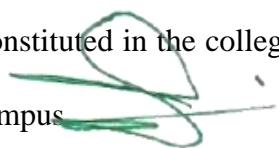
4. BAN ON USE OF PLASTIC

Single-use plastic items such as plastic bottles, bags, spoons, straws and cups are banned completely and awareness is created among staff and students through orientation and display boards in the premises. To restrict the use of plastic, measures have been taken to replace plastic tea cups and glasses with steel glasses in the canteen. The staff and students are informed to use steel or copper water bottles instead of plastic bottles.

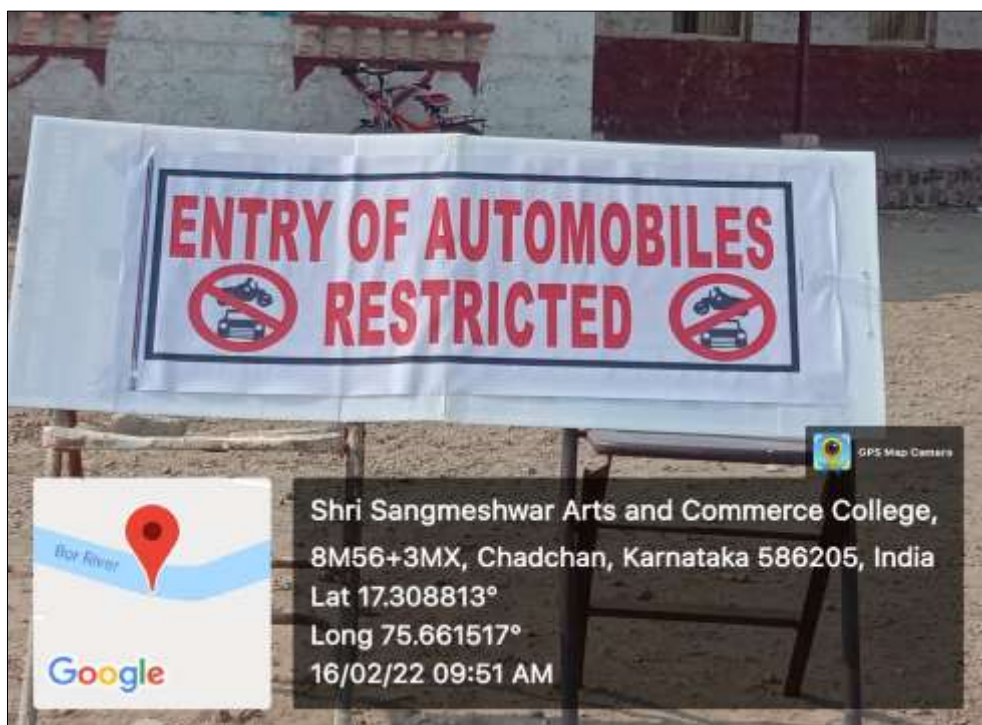
5. LANDSCAPING

Landscaping of the college is worth seeing and reflects aesthetic sense. The institute has a canopy of trees and plants to make the environment pollution free to safeguard the health of all the inmates. The lawns and the trees provide shade and beautiful ambience. Utmost care is taken to develop and maintain green landscaping by trained gardeners and supervisor. The construction, maintenance and beautification committee constituted in the college looks after the development and maintenance of the greenery in the campus




Principal
Shri Sangameshwar Arts & Comm. College
CHACHCHAN-586-205. (Dist. vitavapur)

1. RESTRICTED ENTRY OF AUTOMOBILES



Principal

**Shri Sangameshwar Arts & Comm. College
CHADCHAN-586-205. (Dist. Vijayapur)**

2. USE OF BICYCLES



A handwritten signature in green ink, appearing to be the name of the Principal.

Principal

**Shri Sangameshwar Arts & Comm. College
CHADCHAN-586-205. (Dist. vitavapur)**

PUBLIC TRANSPORT USED BY STUDENTS



Principal

Shri Sangameshwar Arts & Comm. College
CHADCHAN-586-205. (Dist. Vijayanpur)

PUBLIC TRANSPORT USED BY STUDENTS



Principal

Shri Sangameshwar Arts & Comm. College
CHADCHAN-586-205. (Dist. vitavapur)

PUBLIC TRANSPORT USED BY STUDENTS AND STAFF MEMBERS



Principal

**Shri Sangameshwar Arts & Comm. College
CHADCHAN-586-205. (Dist. vitavapur)**

PUBLIC TRANSPORT USED BY STUDENTS AND STAFF MEMBERS



Principal

**Shri Sangameshwar Arts & Comm. College
CHADCHAN-586-205. (Dist. vitavapur)**

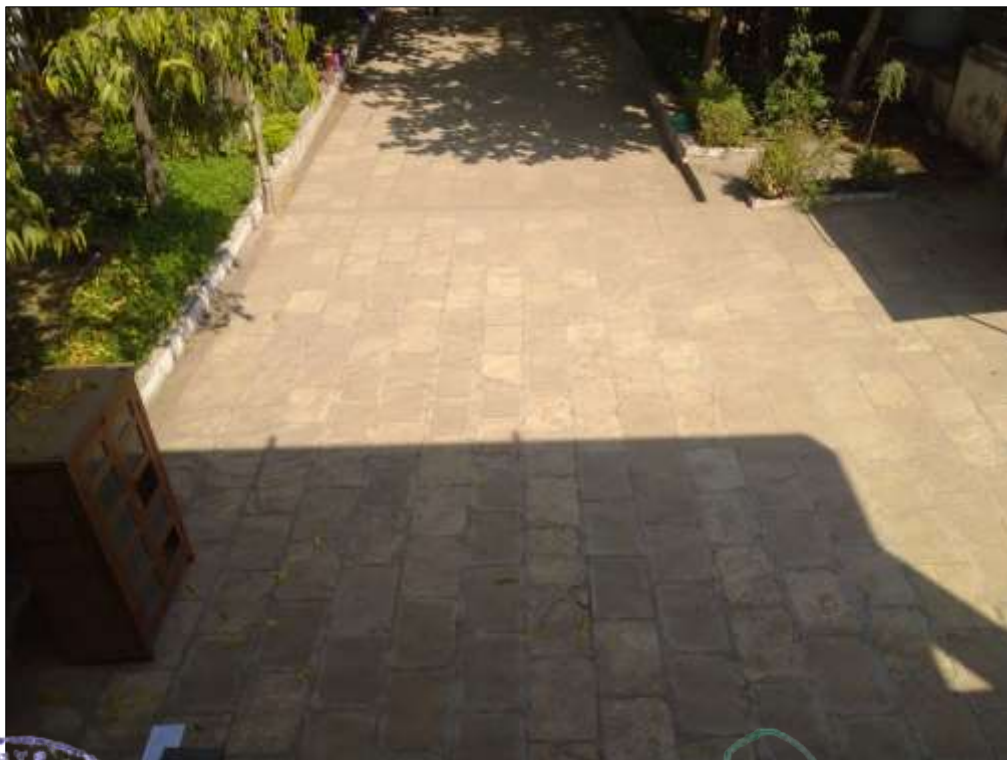
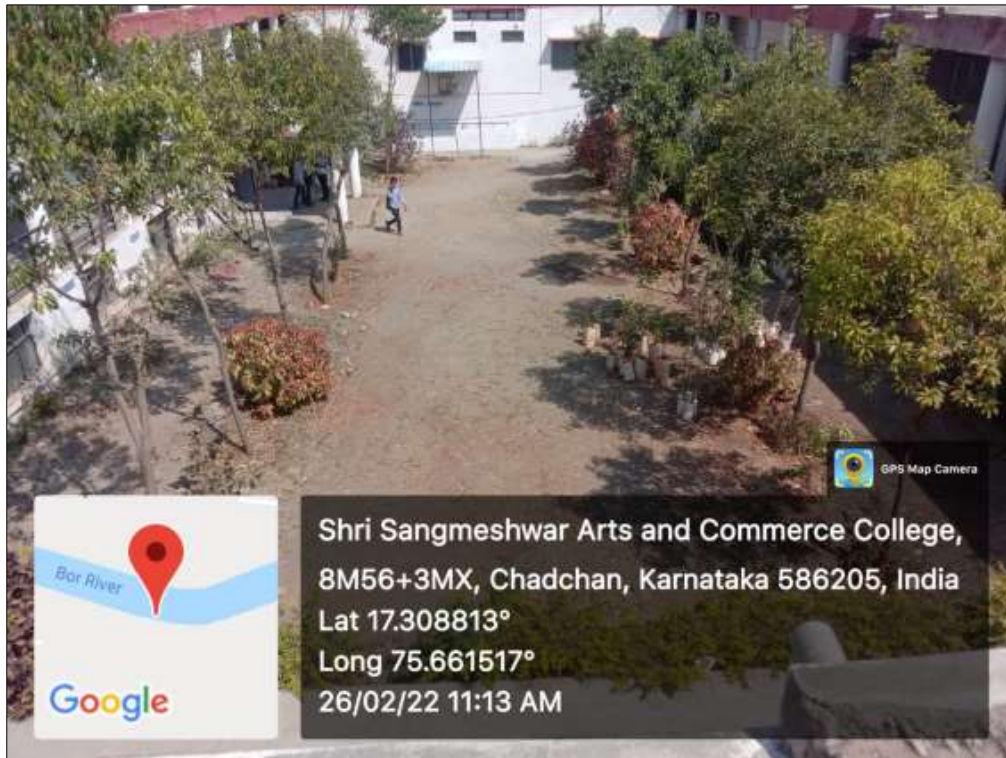
3. PEDESTRIAN-FRIENDLY PATHWAYS



Principal

**Shri Sangameshwar Arts & Comm. College
CHADCHAN-586-205. (Dist. Vijayanpur)**

PEDESTRIAN-FRIENDLY PATHWAYS'S



Principal

**Shri Sangameshwar Arts & Comm. College
CHADCHAN-586-205. (Dist. Vijayanpur)**

4. BAN ON USE OF PLASTIC



Principal

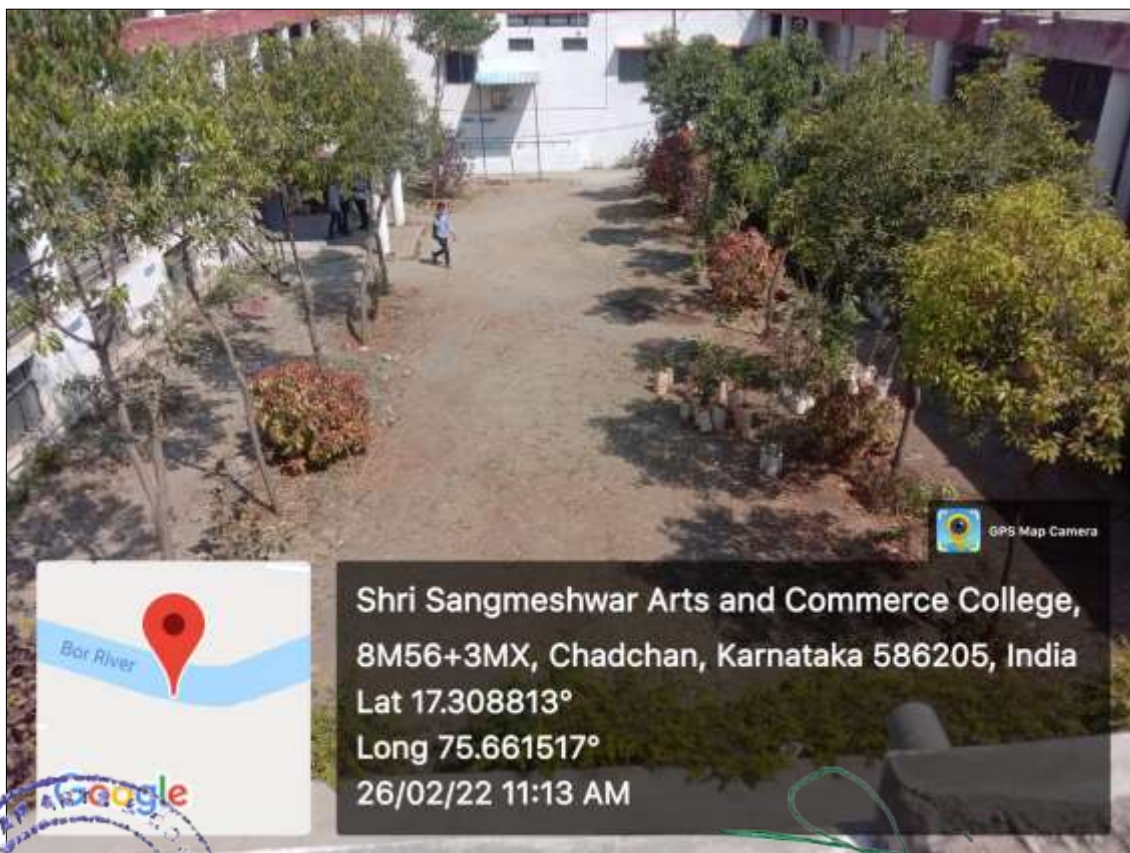
**Shri Sangameshwar Arts & Comm. College
CHADCHAN-586-205. (Dist. vitavapur)**

BAN ON USE OF PLASTIC



Shri Sangameshwar Arts & Comm. College
CHADCHAN-586-205. (Dist. vitavapur)

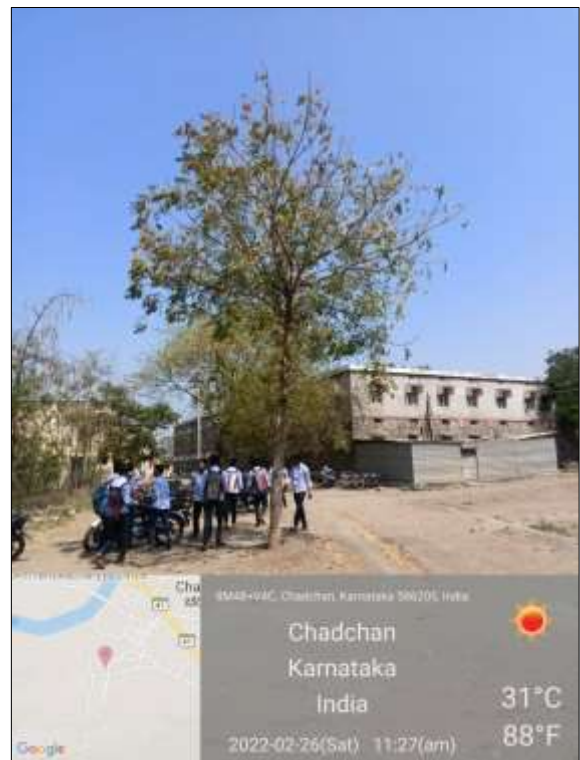
5. LANDSCAPING




Principal

**Shri Sangameshwar Arts & Comm. College
CHADCHAN-586-205. (Dist. vitavapur)**

LANDSCAPING




Principal
Shri Sangameshwar Arts & Comm. College
CHADCHAN-586-205. (Dist. Vijayanpur)

LANDSCAPING



Principal

**Shri Sangameshwar Arts & Comm. College
CHADCHAN-586-205. (Dist. Vijayanpur)**

LANDSCAPING



Principal

**Shri Sangameshwar Arts & Comm. College
CHADCHAN-586-205. (Dist. Vijayanpur)**

LANDSCAPING



A green handwritten signature.

Principal

**Shri Sangameshwar Arts & Comm. College
CHADCHAN-586-205. (Dist. vitavapur)**

LANDSCAPING



Principal

**Shri Sangameshwar Arts & Comm. College
CHADCHAN-586-205. (Dist. Vijayanpur)**

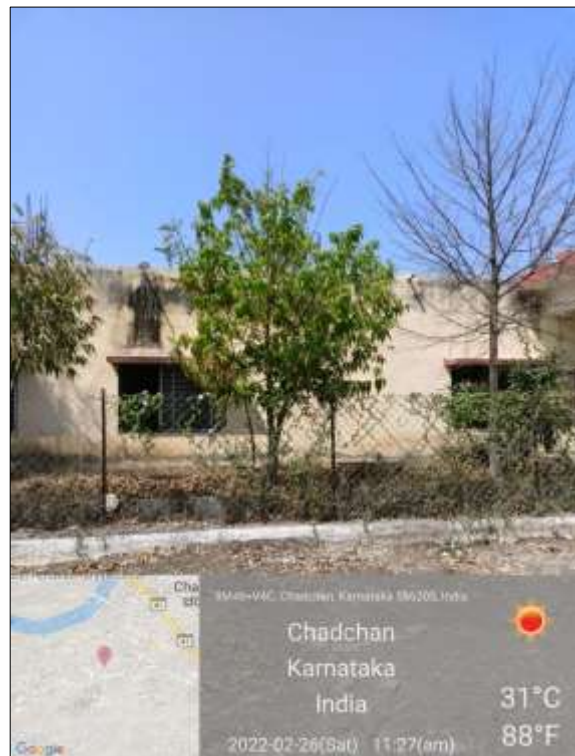
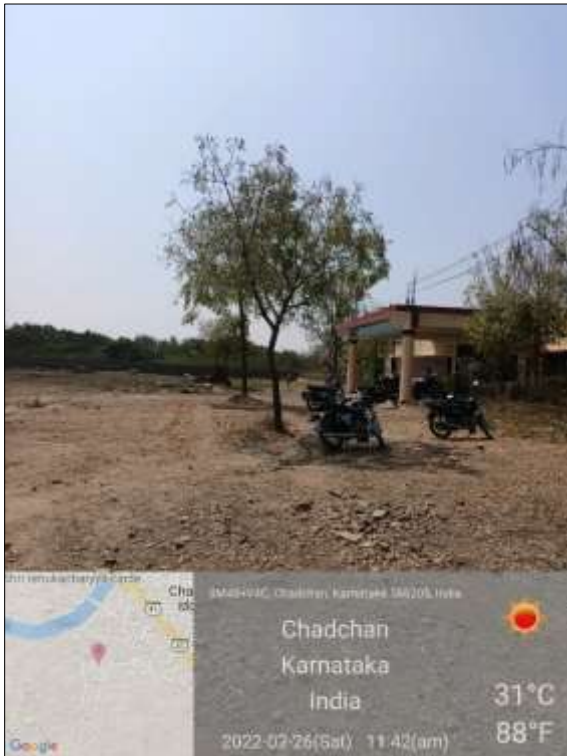
LANDSCAPING



Principal

**Shri Sangameshwar Arts & Comm. College
CHADCHAN-586-205. (Dist. vitavapur)**

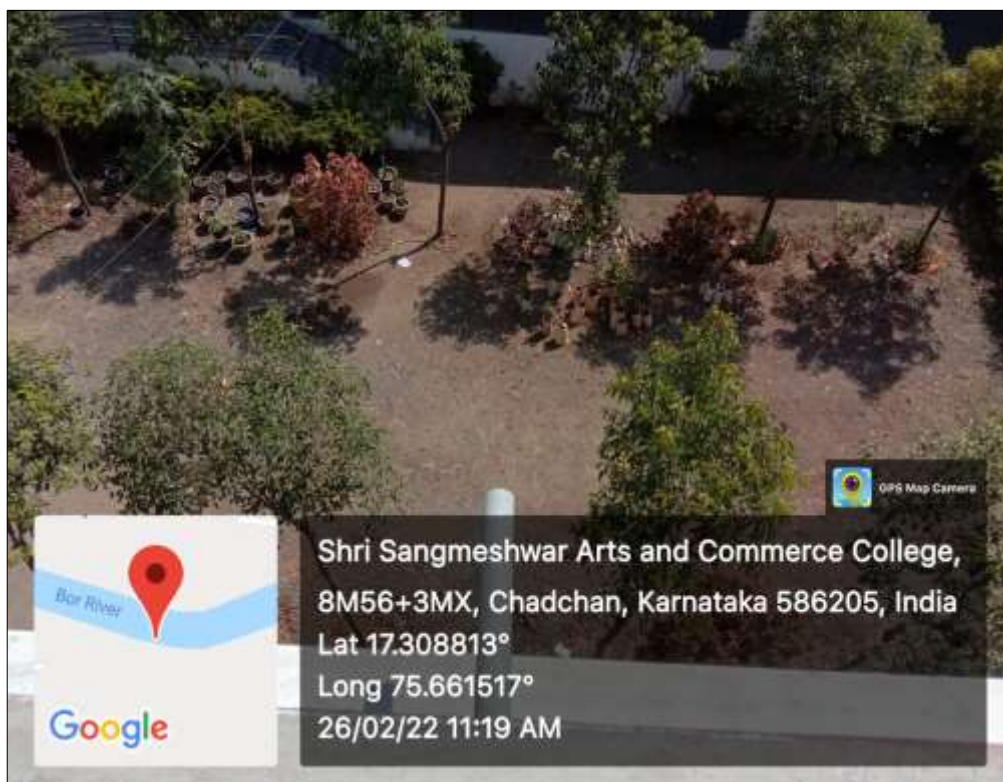
LANDSCAPING



Principal

**Shri Sangameshwar Arts & Comm. College
CHADCHAN-586-205. (Dist. Uttara)**

LANDSCAPING



Principal

**Shri Sangameshwar Arts & Comm. College
CHADCHAN-586-205. (Dist. Vijayapur)**